

---

# User manual

(GB28181 Device)

*Happytimesoft Technology Co., LTD*

---

## Declaration

All rights reserved. No part of this publication may be excerpted, reproduced, translated, annotated or edited, in any form or by any means, without the prior written permission of the copyright owner.

Since the product version upgrade or other reasons, this manual will subsequently be updated. Unless otherwise agreed, this manual only as a guide, this manual all statements, information, recommendations do not constitute any express or implied warranties.

---

[www.happytimesoft.com](http://www.happytimesoft.com)

---

## Table of Contents

<b>Chapter 1 Key features.....</b>	<b>4</b>
<b>Chapter 2 Configuration.....</b>	<b>5</b>
2.1 Configuration Templates.....	5
2.2 Configuring Description.....	5
<b>Chapter 3 GB28181 自动化测试工具.....</b>	<b>7</b>
<b>Chapter 4 Run GB28181Device.....</b>	<b>9</b>

---

## Chapter 1 Key features

Support GB28181 2016 version

Support H264 PS package

Support audio talk

Support subscription, notification function

Support recording playback

Support recording download

Support audio broadcast

Support cross-platform compilation

Small target file size

Suitable for embedded device development

---

## Chapter 2 Configuration

### 2.1 Configuration Templates

```
<?xml version="1.0" encoding="utf-8"?>
<config>
  <server_ip>192.168.1.50</server_ip>
  <server_port>5060</server_port>
  <server_id>34020000002000000001</server_id>
  <server_domain>3402000000</server_domain>
  <device_id>34020000001110000001</device_id>
  <device_name>GB28181 Device</device_name>
  <channel_id name="channel1">34020000001310000001</channel_id>
  <password>12345678</password>
  <protocol>udp</protocol>
  <reg_expires>3600</reg_expires>
  <heartbeat_interval>10</heartbeat_interval>
  <heartbeat_count>3</heartbeat_count>
  <log_enable>1</log_enable>
  <log_level>1</log_level>
</config>
```

### 2.2 Configuring Description

<server\_ip>

Specify the SIP server address.

<server\_port>

Specify the SIP server port.

<server\_id>

Specify the SIP server number.

<server\_domain>

Specify the SIP server domain.

<device\_id>

Specified device number.

<device\_name>

---

Specified device name.

<channel\_id>

Specify device channel number and channel name.

This node can be added more than one, you can specify multiple channel numbers.

<password>

Specify device registration password

<protocol>

Specify SIP message protocol, "tcp" or "udp"

<reg\_expires>

Registration timeout, unit is second.

<heartbeat\_interval>

Heartbeat message interval, in seconds.

<heartbeat\_count>

heartbeat timeout count

<log\_enable>

Whether to enable the log function, 0-disable, 1-enable

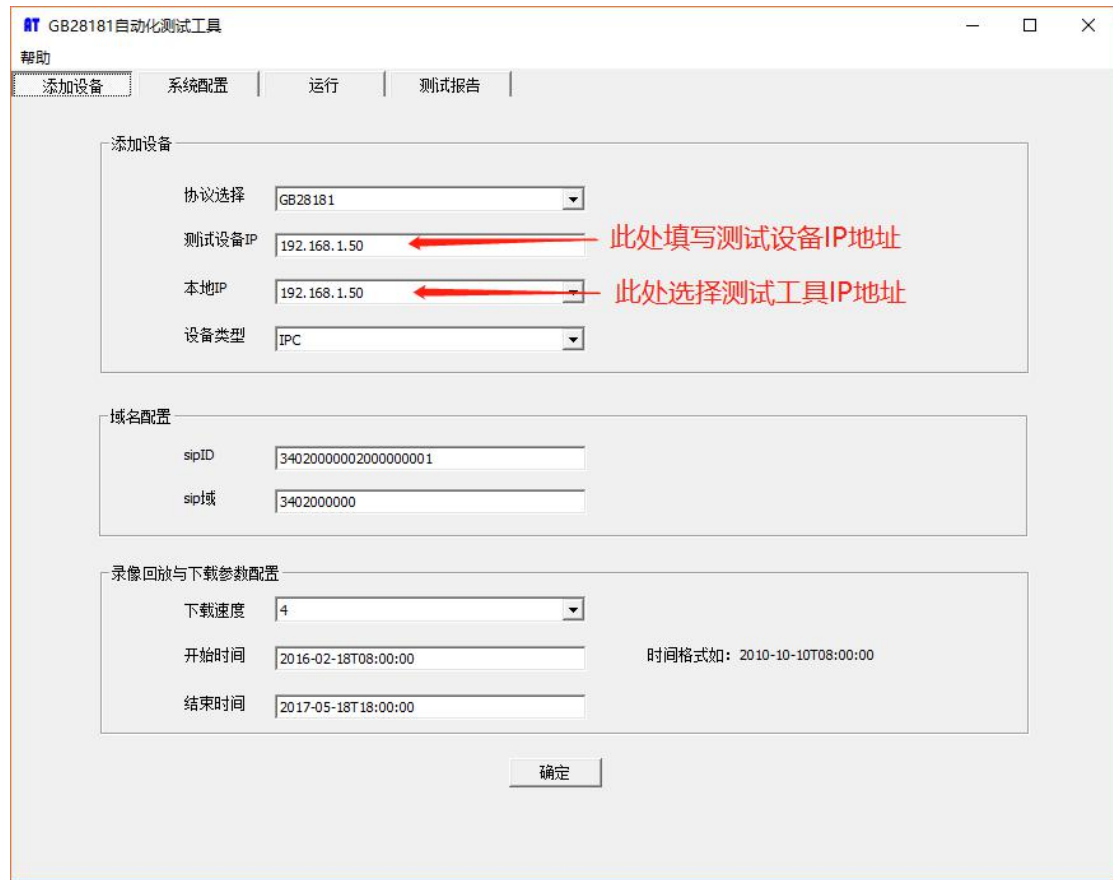
<log\_level>

The log level:

TRACE	0
DEBUG	1
INFO	2
WARN	3
ERROR	4
FATAL	5

## Chapter 3 GB28181 自动化测试工具

1. 启动 GB28181 自动化测试工具，设置测试设备地址：

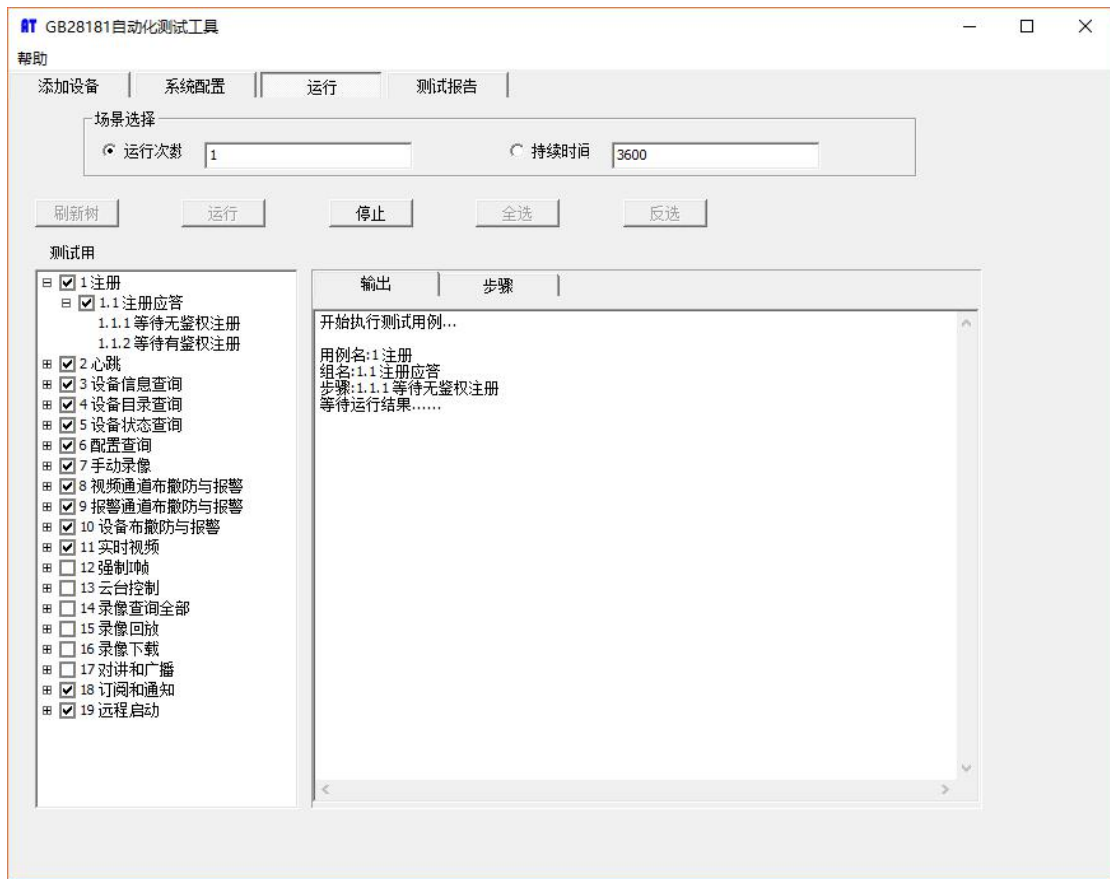


The screenshot shows the 'GB28181 自动化测试工具' (GB28181 Automation Testing Tool) window. The window has a title bar with standard minimize, maximize, and close buttons. Below the title bar is a menu bar with '帮助' (Help) and four tabs: '添加设备' (Add Device), '系统配置' (System Configuration), '运行' (Run), and '测试报告' (Test Report). The '添加设备' tab is active, displaying a configuration form with three sections:

- 添加设备 (Add Device):** Contains four fields: '协议选择' (Protocol Selection) set to 'GB28181', '测试设备IP' (Test Device IP) set to '192.168.1.50', '本地IP' (Local IP) set to '192.168.1.50', and '设备类型' (Device Type) set to 'IPC'. Red arrows point from the '测试设备IP' and '本地IP' fields to red text annotations: '此处填写测试设备IP地址' (Enter test device IP address here) and '此处选择测试工具IP地址' (Select test tool IP address here).
- 域名配置 (Domain Configuration):** Contains two text input fields: 'sipID' with the value '3402000002000000001' and 'sip域' (sip domain) with the value '3402000000'.
- 录像回放与下载参数配置 (Recording Playback and Download Parameter Configuration):** Contains three fields: '下载速度' (Download Speed) set to '4', '开始时间' (Start Time) set to '2016-02-18T08:00:00', and '结束时间' (End Time) set to '2017-05-18T18:00:00'. To the right of these fields is the text '时间格式如: 2010-10-10T08:00:00' (Time format like: 2010-10-10T08:00:00).

At the bottom center of the window is a '确定' (OK) button.

2. 勾选测试所需的步骤，然后单击“运行”。



3. 编辑 GB28181 Device 配置文件 config.xml, 指定 SIP 服务器地址, 然后启动 GB28181Device 进行测试.



---

## Chapter 4 Run GB28181Device

The gb28181 device is a console application.

Windows: to run the server, simply type "gb28181device".

Linux: to run the server, type "./start.sh", on linux platform, gb28181 device run as daemon by default.